

# FL936F-II

## WHEEL LOADER



# FOTON LOVOL

### **LOVOL HEAVY INDUSTRY CO.,LTD.**

Add:No.192 S Beihai Road,Weifang,Shandong,China. PC:261206

Tel:+86-536-7527076 Fax:+86-536-2288909 Web:www.lovol.com

Specifications and designs are subject to change without prior notice.

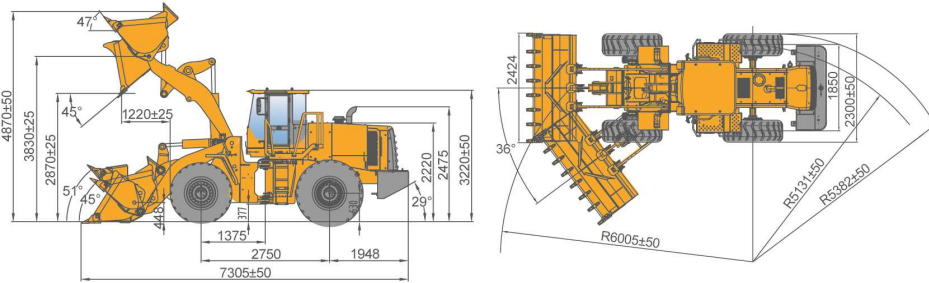
Machines shown may include optional parts.

The above parameters are subject to change without notice, the illustrations in text is not always the type of standard models.

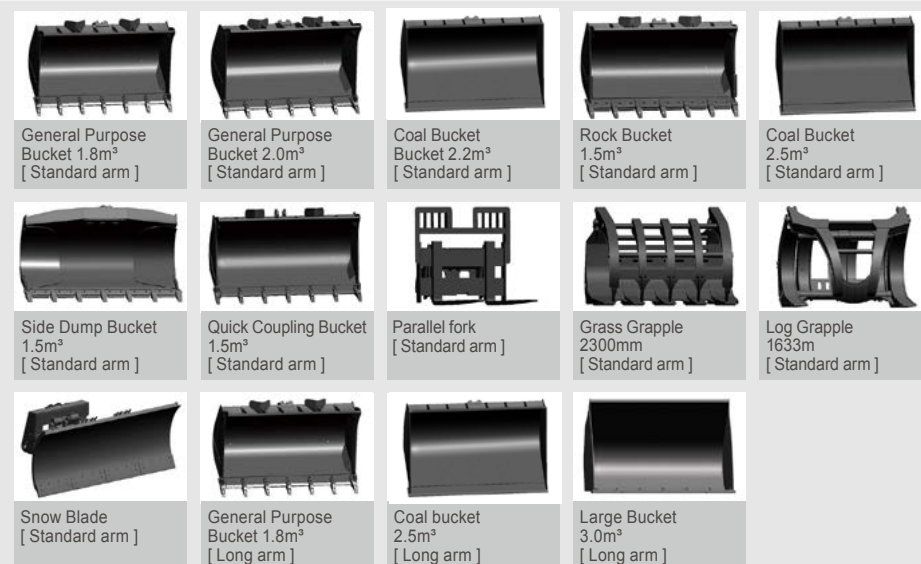
**ADHESIVE FOR DEALER CONTACT**

## Products Information

SPECIFICATIONS		UNITS	FL936F-II (YUCHAI)	FL936F-II (WEICHAI)	FL936F-II (DCEC)		
Main Specifications	Rated Load	kg	3000	3000	3000		
	Operating Weight (Standard)	kg	10300	10800	10300		
	Bucket Capacity	m <sup>3</sup>	1.8	2.2	1.8		
	Boom Lifting Time	S	5.7	5.7	5.7		
	Total Cycle Time	S	10.5	10.5	10.5		
	Max.Traction Force	kN	92	92	92		
	Max.Breakout Force	kN	120	115	120		
		mm	7250×2420×3220	7305×2424×3220	7250×2420×3220		
Engine	Model	—	YUCHAI YC6B125-T20	WEICHAI WP6G125E22	DCEC 6BT5.9-C130		
	Type	—	Six cylinder in line, direct injection, self-inspiration and water cooled	Six cylinder in line, direct injection, Turbo charged and water cooled	Six cylinder in line, direct injection, Turbo charged and water cooled		
	Horsepower	kW/rpm	92/2200	92/2200	97/2200		
	Peak Torque/Speed	N·m/rpm	463/1400-1600	500/1400-1600	560/1500		
	Bore×Stroke	mm	Φ108×125	Φ105×130	Φ102×120		
	Displacement	L	6.871	6.754	5.9		
	Fuel consumption in rated working condition	g/kW·h	235	225	235		
	Fuel Tank	L	140	140	140		
	Drivetrain	Travel Speed	Forward	km/h	0-37	0-37	0-37
			Reverse	km/h	0-31.5	0-31.5	0-31.5
Gear Shift		/	F4/R2	F4/R2	F4/R2		
Max. Gradeability		°	30	30	30		
Steering Angle		°	36	36	36		
Tire		—	17.5-25	17.5-25	17.5-25		
Service brake		—	Caliper disc brake				
Parking brake		—	Flexible shaft controlled caliper disc brake				
Min. Turning Radius		Center of Outside tire	mm	5131	5131	5131	
		Outside of the bucket	mm	6005	6005	6005	
Hydraulics	Working System Pressure	Mpa	16	16	16		
	Working System Displacement	ml/r	63	63	63		
	Steering System Pressure	Mpa	14	14	14		
	Steering System Displacement	ml/r	63	63	63		
Performance Data	Oil tank	L	110	110	110		
	Wheelbase	mm	2750	2750	2750		
	Wheel Tread	mm	1850	1850	1850		
	Min.Ground Clearance	mm	375	375	375		
	Dump Height – fully raised,45° dump	mm	2870	2870	2870		
Dump Reach – fully raised,45° dump	mm	1150	1220	1150			



## Allied attachments



## Features of FL936F-II



Equipped with Weichai-DEUTZ WP6G125E22 engine, advanced technology, excellent durability, powerful efficiency. Yuchai YC6B125-T20 and DCEC 6BT5.9-C130 engines are optional.



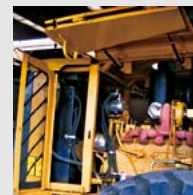
Mature Shantui torque converter and excellent Hangchi power shift transmission, adopted to the simple structure and reliable quality. Dry-brake axle is manufactured by FOTON LOVOL with excellent performance.



Full hydraulic load-sensing steering enables light and smart operation. Dual-pump flow-converging implement hydraulic system offers energy and high efficiency. 24° taper seal accompanied by O-ring face seal provides durable leak-free connection. Humanization designed joystick effectively reduces operator fatigue for long time operation.



Flat glass and 360° view cab offer a full scene. Optional safety cab, which passed FOPS&ROPS test, guarantees the safety of operator.



The radiator utilizes two-layer layout to allow better air flow. The adaptation to high working condition is improved, allowing normal work under 45°C. Side opening hood with gas spring makes daily checking easier. 130% enhanced strength is realized by skeletal structure.



Optimized A/C system with significant performance. Independent radiation enables the condenser a better cooling effect. Space in cab is enlarged after evaporator was moved outside of the cabin.



Water-proof plug connector improves reliability of electrics.



Front and rear frames are center-articulated with small turning radius and smart maneuverability. It is capable and flexible to work in tight quarters. Consistent overlap of front and rear wheel tracks saves the energy when loader turns around, and it also offers a protection for tires and driveshaft.



Bucket blade is made from the special advanced material with outstanding performance on wear resistance testing. More durable reliability comes from co-operating with one of the first level manufacture in China.



New designed hood in front axle protects brake caliper from sand or stone when loading work. Thus could reduce abrasion of brake caliper.